

# Novell® GroupWise® 7

[www.novell.com](http://www.novell.com)

---

PRODUCT BROCHURE



**Novell®**

# Secure, Reliable Collaboration Within and Beyond Your Organization

# N

*“We periodically look at Microsoft, but Active Directory\* doesn’t compare to the strength of eDirectory for managing users and objects. We have extreme confidence in our Novell systems. We do intrusion tests twice a year and have watched hired hackers get into a Microsoft environment, but they have never been able to break Novell.”*

—Annetta Smith,  
vice president of  
information systems,  
Harbor Federal Bank

Your collaborative environment is where your work gets done. With an estimated 80 percent of your company’s intellectual property flowing through e-mail every day, security is paramount. And because business shuts down when e-mail goes down, it’s vital for your collaboration solution to run without interruption. Novell® GroupWise® 7 provides secure, reliable collaboration to drive efficient business. It’s the leading alternative to Microsoft\* Exchange—and companies are making the switch every day.

## SECURE COLLABORATION AND PEACE OF MIND

Business collaboration knows no bounds.

Your people must be able to share ideas, insights and perspectives with virtually anyone—anytime, anywhere. And while there are more ways to collaborate than ever before, there are also more ways for unwelcome parties to participate or interrupt the process.

Fortunately, there’s Novell GroupWise 7. This premier communications and collaboration tool helps your organization maintain secure, authenticated communications within your organization, as well as with companies and individuals beyond your firewall. One enterprise-proven collaboration system. One secure solution. Zero worries.

GroupWise 7 works across traditional, Web-based and wireless clients, providing users with integrated e-mail, instant messaging and scheduling, as well as task, contact and document

management. Equally important, its rich security capabilities and streamlined management provide peace of mind for your IT staff. Here are several reasons why GroupWise 7 gives you the best security available:

- It authenticates to Novell eDirectory™ or any LDAP-compliant directory.
- Users receive secure, end-to-end communications among client machines and even individual software agents.
- It supports all major standards, including Secure Sockets Layer (SSL), Secure Multipurpose Internet Mail Extension (S/MIME), Public Key Infrastructure (PKI) and Transport Layer Security (TLS).

## PROTECTION AND AVAILABILITY YOU CAN COUNT ON

Malicious virus attacks, which are typically initiated through e-mail, can bring the productivity of an enterprise to a grinding halt, leaving your

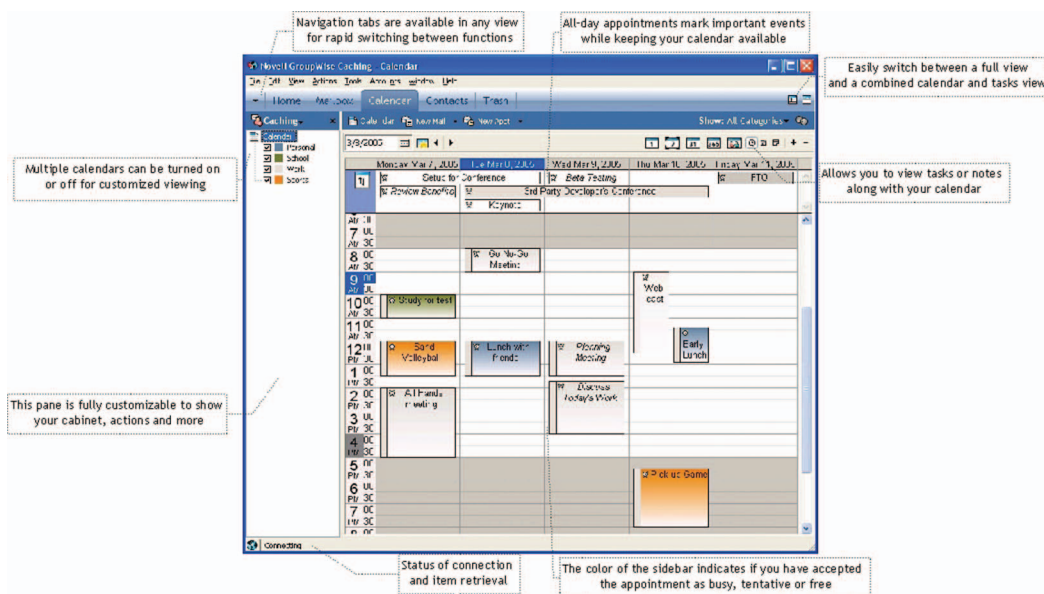
customers to explore other options. In fact, according to ICSA Labs, 88 percent of viruses are spread by e-mail.

GroupWise 7 provides tight integration with leading anti-virus and anti-spam solutions. Working with partner products, it detects and eliminates viruses that might hamper productivity and impair business operations. In addition, GroupWise is based on a proven, highly reliable architecture that minimizes downtime. In a February 2005 survey of GroupWise customers, 52 percent said they have not needed to reboot their GroupWise system for over six months,

and 87 percent experience less than 10 hours of unplanned downtime per year.

Here are several ways GroupWise 7 keeps your critical collaboration systems and people working:

- Multiple levels of spam control help restrict unsolicited bulk e-mail, so productivity isn't impacted by e-mail overload.
- Built-in redundancy features, such as LDAP pooling, keep essential services available to your users, even in the rare event of a system glitch or hardware failure.
- Linux\* clustering support provides even greater reliability.



## THE VALUE OF EFFICIENT ADMINISTRATION

GroupWise 7 gives you the best in communications and collaboration capabilities while minimizing the cost of implementing, managing and maintaining a high-performance system. Here are several ways GroupWise 7 helps IT staffs work smarter:

- A single GroupWise administrator can easily manage more than 10,000 users; in fact, several GroupWise administrators currently manage more than 20,000 users each.
- GroupWise can handle a load capacity up to 200 times greater than that of Exchange, reducing your hardware acquisition and management costs.

*“One of the reasons we chose to upgrade to Novell GroupWise was to maintain stability and security. In seven years, we have never had a serious virus attack or e-mail outage.”*

—Ron Blakey,  
director of  
information technology,  
The Region of Durham

*Customizable calendar views in GroupWise 7 ensure efficient scheduling and time management.*

*“Novell GroupWise has been pretty much hands-off. We’re able to do more with less. Our environment keeps growing, but we don’t have to grow our staff along with it.”*

—Corey Cush,  
senior director,  
networking services,  
New York Health and  
Hospitals Corporation

The new GroupWise 7  
“MyDay” view for  
Windows clients lets users

manage their daily e-mail,  
calendar and tasks on one  
convenient screen.

“We save a tremendous  
amount of money with  
Novell licensing. I stopped  
counting at \$500,000.

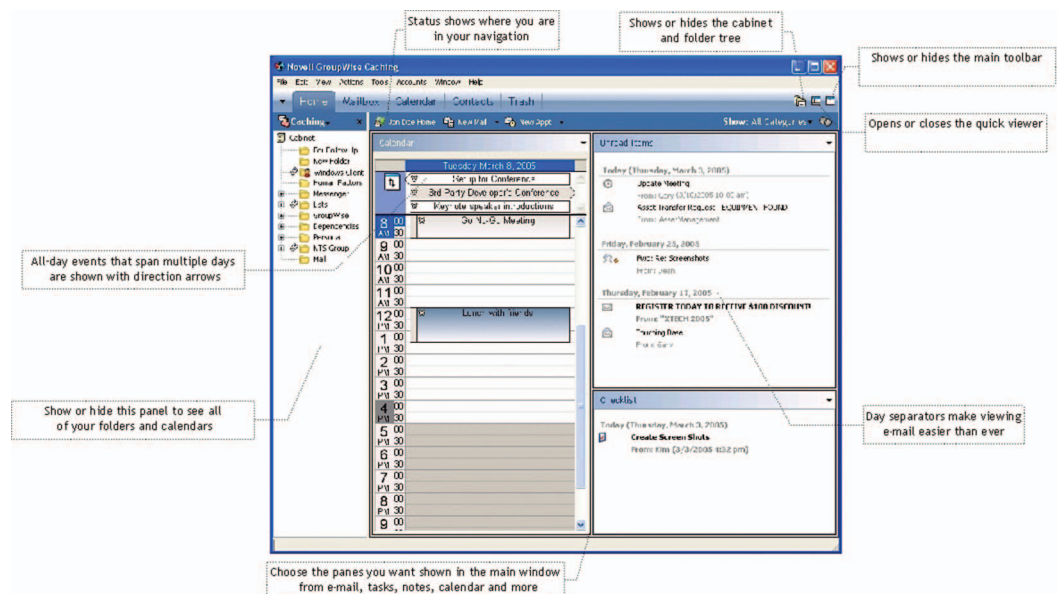
Being able to easily roll out  
multiple servers helps us  
maintain an agile business  
and react quickly in our  
market. We like to be the  
small-town bank that  
can get there faster than  
anyone else.”

—Brian Diegan,  
vice president  
of information technology,  
First National Bank  
of Pennsylvania

- Adherence to new regulatory requirements helps you manage business risks.
- The GroupWise licensing model is more flexible and affordable than that of Microsoft Exchange.
- A new migration utility makes it easy to switch from Microsoft Exchange 5.5, Outlook\* 2000 or a previous version of GroupWise.

## INNOVATION CONTINUES

Novell has recently delivered innovative products and services for Linux, secure identity management, network management and more. GroupWise 7 has its share of powerful, new features and enhancements. Native Outlook support, PDA integration with key partners, corporate instant messaging and API advancements are just a few of the new features that put GroupWise 7 in a class all its own.



## OPEN MEANS CHOICE AND FLEXIBILITY

Collaboration by its very nature involves multiple people, technologies, products and companies. As an open, multiplatform collaboration environment, GroupWise preserves your IT investments and keeps your options open for the future. That’s the power of open standards and open APIs.

Whether you’re migrating to Linux to gain increased flexibility and lower cost of ownership or looking to improve security and business efficiency while reducing management expense, here are several important points about GroupWise 7 to keep in mind:

- It runs on NetWare®, Windows\* and Linux servers (both SUSE® LINUX and Red Hat\*).
- It supports a wide variety of clients, including Evolution™, Windows, Linux and Mac\*, as well as WebAccess and an Outlook plug-in.

- It includes synergistic services with collaboration modules that enhance one another to simplify the user experience and increase user productivity. For example, presence is embedded in e-mail and file sharing is embedded in real-time messaging.
- It offers value-added business solutions and technologies from third-party developers and the open source community that easily integrate to solve your business problems.

## GROUPWISE 7 ENHANCED AND NEW FEATURES

FEATURE	GROUPWISE 6	GROUPWISE 6.5	GROUPWISE 7
E-mail with Status and Retraction	Y	Y	Y
Rules-based Messaging Handling	Y	Y	Y
Flexible Forwarding	Attachment or simple, multiple selection forwarding	Y	Y
Flat Forwarding Support for E-mail to Pagers	Y	Y	Y
Notification of New Mail, Alarms	All modes	All modes	Y
SMS-enabled Notification (Alarms to Pagers, Cell Phones)	Y	Y	Y
Instant Messaging	N	Y	Y
Task Management	Y	Enhanced with to-do list and checklist capabilities	Y
Contact Management	N	Basic	Y
Address Book Printing	Y	Y	Y
Mailbox Proxy	Y	Y	Y
Shared Folders	Y	Y	Y
Shared Address Books	Enhanced: Column headings may now be customized by the recipient	Y	Y
Instant Information	Y	Y	Y
Document Management	Y	Y	Y
MyDay View:	N	N	Y
Multi-function View	N	N	Y
One View of Full Experience	N	N	Y
Navigation Bar	N	N	Y
User-level Time Zone Support	Y	Y	Y
Calendar and Scheduling	Y	Y	Y
Calendar Printing to HTML	Y	Y	Y
Multiple Calendars:	N	N	Y
Add and Remove Calendars	N	N	Y
View One or All Calendars Simultaneously	N	N	Y
All-day and Multi-day Appointments	N	N	Y

continued on next page

*“GroupWise is head and shoulders above Microsoft Exchange. My peers at other organizations describe problems with their Exchange e-mail systems that I don’t even think about. And now that GroupWise is supported on Linux, we will enjoy additional savings on collaboration.”*

—Steve O’Brien,  
director of information  
technology operations,  
Jefferson County, CO

FEATURE	GROUPWISE 6	GROUPWISE 6.5	GROUPWISE 7
<b>User Interface Enhancements:</b>			
Color-coded Categories	N	Y	Y
Checklist Folder	N	Y	Y
Customization of Heading to Messaging Subject	N	Y	Y
<b>WebAccess</b>	Enhanced	Y	Y
<b>WebAccess and Wireless License</b>	Y	Y	Y
<b>WebAccess Near Feature Parity with Windows Client:</b>	N	N	Y
Separate Viewer Agent	N	N	Y
<b>Delivery Status Notification for Internet E-mail (ESMTP DSN)</b>	Y	Y	Y
<b>PDA Cradle Synchronization</b>	N	N	Y
<b>Palm Web Clipping</b>	Y	Y	Y
<b>PQA Enhancements for the Palm V</b>	Including WAP, HDML, Palm Web clipping	Enhanced, Palm Web GW clients for Palm and Pocket PC; two-way access to RIM and Synch ML devices	Y
<b>Evolution Client Support</b>	N	N	Y
<b>Outlook Support:</b>	N	N	Y
E-mail, Tasks and Notes	N	N	Y
Calendaring with Busy Search	N	N	Y
Shared Folders	N	N	Y
Today View	N	N	Y
ActiveSync Support (Palm, PocketPC)	N	N	Y
.pst files	N	N	Y
Offline Mode (GroupWise Caching)	N	N	Y
Delegated Support (Proxy)	N	N	Y
Signatures	N	N	Y
Personal and System Address Books	N	N	Y
Outlook 2002 and Higher Compatibility	N	N	Y
<b>Client-side LDAP Support</b>	Y	Y	Y
<b>Server-side LDAP Support</b>	Y	Y	Y
<b>Server-side LDAP Authentication</b>	Y	Y	Y
<b>LDAP Pooling</b>	N	Y	Y
<b>Remote Synchronization</b>	Y	Y	Y
<b>Remote Mailbox Backup</b>	Y	Y	Y
<b>Remote Mailbox Archiving</b>	Y	Y	Y
<b>Web-based Monitoring</b>	Y	Y	Y
<b>SNMP and E-mail Alerts</b>	Y	Y	Y
<b>MAPI Support</b>	Y	Y	Y
<b>Version-level Security</b>	Y	Y	Y
<b>Mass-change Operations</b>	Y	Y	Y

*continued on next page*

FEATURE	GROUPWISE 6	GROUPWISE 6.5	GROUPWISE 7
Full-text Indexing	Y	Y	Y
POP and IMAP Client Support	Y	Y	Y
POP and IMAP Account Import	Y	Y	Y
NNTP Client Support	Y	Y	Y
Free-form Internet Addressing	N	Y	Y
Disk Space Management	Y	Y	Y
Message Size Management	Y	Y	Y
Multi-threaded Mailbox Maintenance	Y	Y	Y
User and System Activity Monitoring	Y	Enhanced through IntelliReach* Control (partner)	Y
Addressing to eDirectory Roles and Groups	Y	Y	Y
Application Scripting	N	Through Advansys Formative (partner)	Y
ConsoleOne- Administration	Y	Y	Y
User Move Status Utility	N	Y	Y
Inter-server User Moves	Enhanced: Takes 20% of the time with no loss of folder shares, proxies or message status	Y	Y
Thousands of Users per Server	Y	Y	Y
Smart Caching	Y	Y	Y
Multiprocessor Support	Enhanced for NetWare 6	Y	Y
SOAP/XML Interface	N	N	Y
Trusted Agent Application Definition	N	Y	Y
Trusted Agent Application Programming Interface (API)	N	Y	Y
Data Exposure Through Open Standards	N	Y	Y
Routing Slips	Y	Y	Y
SMTP over SSL	Y	Y	Y
POP and IMAP Service over SSL	Y	Y	Y
S/MIME	Yes plus v3 support	Y	Y
Multilevel Spam Filtering	N	Y	Y
Integration with Industry-leading Anti-virus Solutions	Y	Y	Y
Clustering Support	Y	Y	Y
Online Backup and Restore	Y	Y	Y

© 2005 Novell, Inc. All rights reserved. Novell, the Novell logo, the N logo, NetWare, ConsoleOne and GroupWise are registered trademarks, and eDirectory and Evolution are trademarks of Novell, Inc. in the United States and other countries. SUSE is a registered trademark of SUSE LINUX AG, a Novell business.

\*Mac is a trademark of Apple Computer, Inc. Linux is a registered trademark of Linus Torvalds. Microsoft, Outlook and Windows are registered trademarks, and Active Directory is a trademark of Microsoft Corporation. Red Hat is a registered trademark of Red Hat, Inc. All other third-party trademarks are the property of their respective owners.

### **Novell Product Training and Support Services**

For more information about Novell's worldwide product training, certification programs, consulting and technical support services, please visit:  
[www.novell.com/ngage](http://www.novell.com/ngage)

### **For More Information**

Contact your local Novell Solutions Provider, or visit the Novell Web site at:  
[www.novell.com](http://www.novell.com)

You may also call Novell at:

1 888 321 4272 US/Canada  
1 801 861 4272 Worldwide  
1 801 861 8473 Facsimile

**Novell, Inc.**  
404 Wyman Street  
Waltham, MA 02451 USA

[www.novell.com](http://www.novell.com)

**Novell**